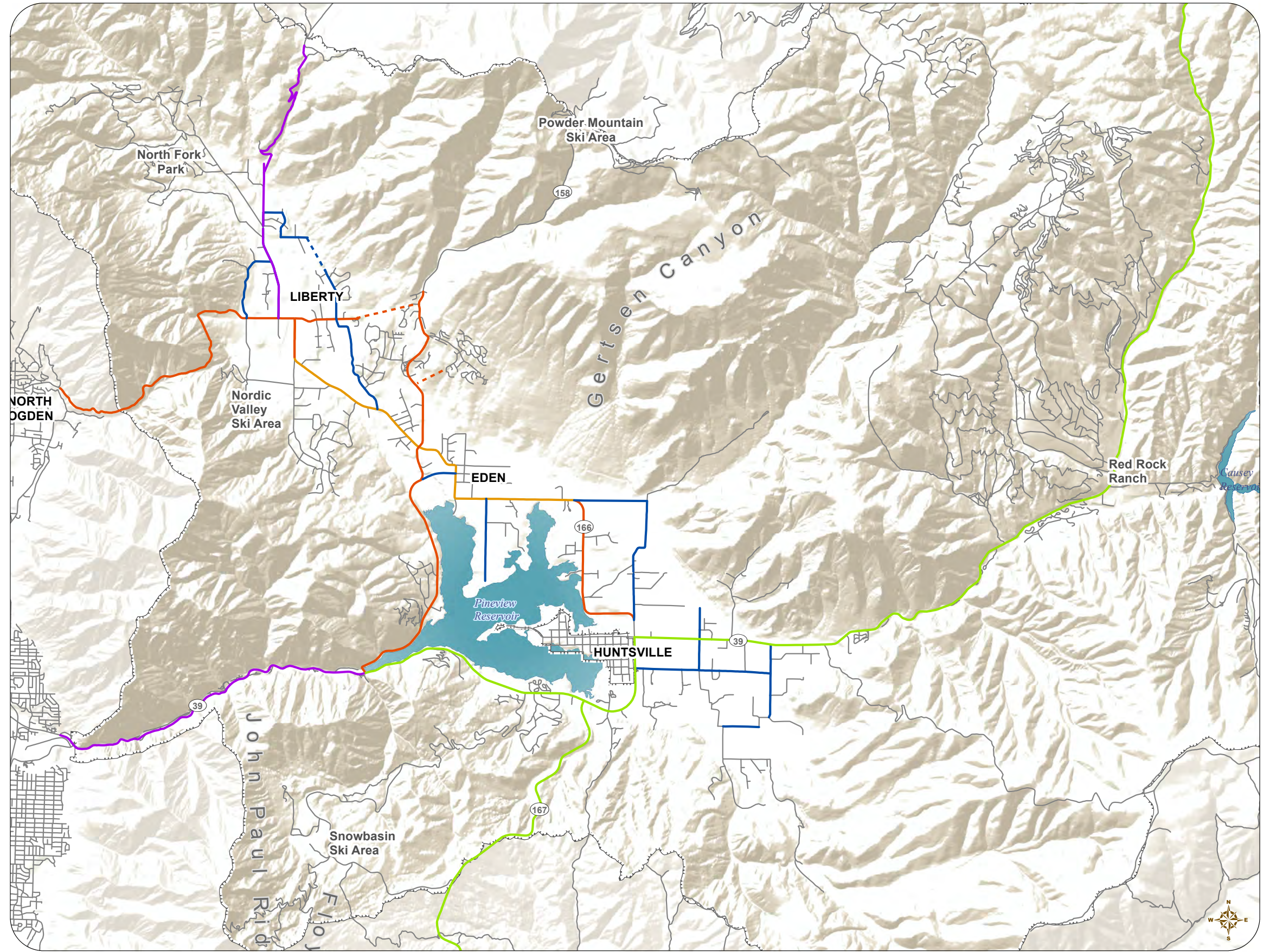


Legend

-  Ogden Valley Boundary
-  Lakes
-  Local Roads
-  Minor Collector, 66'
-  Proposed Minor Collector, 66'
-  Minor Arterial, 66'
-  Collector, 80'
-  Proposed Collector, 80'
-  Rural Major Collector, 100'
-  Arterial, 100'

* The roads indicated on this map as "proposed" with dashed lines are not decided alignments. They are only representative of future road-network connections.



Source:
 UDOT Open Data, Updated on September 9, 2014
 Accessed on October 7, 2014
 Weber County
 USGS Open Data



Streets and Roads

